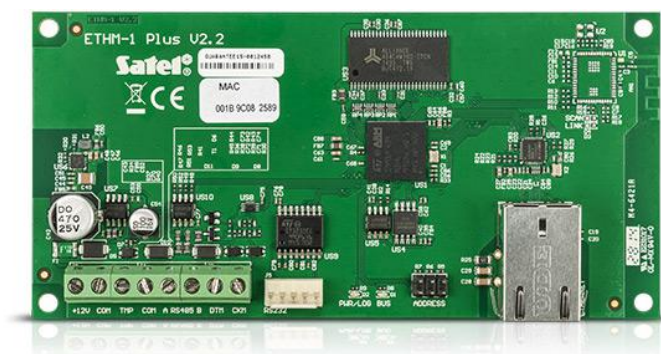


ETHM-1 Plus

ETHERNET COMMUNICATION MODULE

The **ETHM-1 Plus** communication module makes it possible to use Ethernet communication in the **INTEGRA**, **INTEGRA Plus**, **PERFECTA 64 M** and **VERSA** control panels. It provides the capability of reporting and remote programming of the control panels. The **ETHM-1 Plus** module offers the functionality of remote control of the system via the Internet, using a computer, tablet or smartphone.

- supported by the control panels: **INTEGRA**, **INTEGRA Plus**, **PERFECTA 64 M** and **VERSA**
- TCP/IP or UDP reporting
- ability to work in combination with the INT-GSM module (ETHM-1 Plus, version 2.05 or later) or INT-GSM LTE module (ETHM-1 Plus, version 2.07 or later):
 - Dual Path Reporting, compliant with EN 50136
 - backup communication path
- remote programming via **DLOADX** or **PERFECTA Soft** program
- INTEGRA system supervision via **GUARDX** program
- ability to operate the system from a mobile phone using the applications: **INTEGRA CONTROL**, **PERFECTA CONTROL**, **VERSA CONTROL**
- event notification capability using e-mail messages (only INTEGRA Plus*, **VERSA**)
- encrypted data transmission
- support for DHCP automatic address configuration
- open protocol for systems integration via the TCP/IP channel



For remote connection with the **INTEGRA** control panel **DLOADX** in v1.12.004 or newer is required.

* available with v1.13 INTEGRA Firmware

TECHNICAL DATA

Supply voltage	12 V DC
Operating temperature range	-10...+55 °C
Standby mode current consumption	70 mA
Max. current consumption	80 mA
Weight	64 g
Maximum humidity	93±3%
Dimensions	68 x 140 mm
Environmental class according to EN50130-5	II



The actual appearance of the products may differ from the presented images. Product descriptions are provided in the web service for information purposes only.